

RAFI Roadmap: A guide to better investor outcomes

RAFI™ Fundamental Global Index

BENCHMARK All World Cap-Weight Large-Mid
ASSET CLASS Equity

What Is the Process?

Investment Process

1	Determine size of companies using fundamental measures	Fundamental size is the equally weighted average of four fundamental measures: 1) Adjusted Sales 2) Cash Flow 3) Dividends + Buybacks 4) Book Value
2	Segment companies by region and size	Six Regions US Japan UK Europe ex UK Other Developed Emerging Markets Large Co.: Top 86% by cumulative fundamental weight Small Co.: 86-98% by cumulative fundamental weight
3	Select securities	Combine region and size constructs to create desired exposure. <i>For example, RAFI Developed is the top 86% of stocks by RAFI weight in the US, Japan, UK, Europe ex UK and Other Developed regions.</i>
4	Renormalize	Renormalize company weights so that sum of weights equal 100%.
5	Rebalance	Quarterly Staggered Rebalance Portfolio is reconstituted annually on the last business day of March and is rebalanced the last business day of March, June, September, and December.

Will the Strategy Deliver?

This strategy is expected to deliver excess returns in the future because it is theoretically and empirically robust. Every investor should ask five questions before investing:

1. Who is on the other side of the trade?
2. Has the strategy worked over long and varying time periods net of changes in valuation?
3. Does the strategy produce similar results across different regions?
4. Does the the strategy produce similar results across slightly different definitions (e.g., P/B vs. P/S)?
5. Is the strategy investable in the real world net of costs?

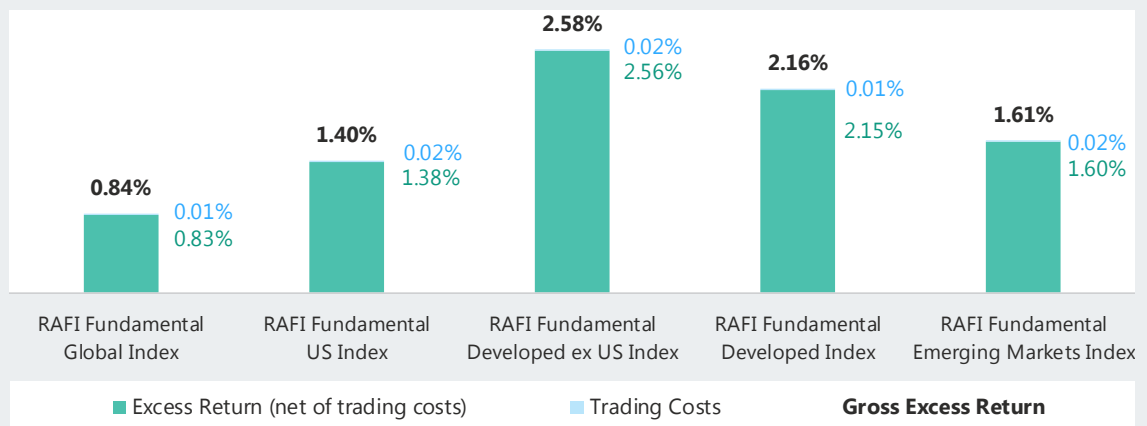
Why This Strategy Delivers

	Theory	Empirical Evidence			
Factor	1. Who's on the Other Side of the Trade?	2. Excess Return*	3. Regions That Work	4. Definitions That Work	5. Trading Costs**
RAFI Fundamental Global Index	The Performance Chaser	0.84%	8 of 8	3 of 4	0.01%
	Rebalancing premium delivers by trading counter to performance chasers: Buys what has done poorly and become newly cheap, and sells what has done well and become newly expensive.				

SOURCE: CRSP/Compustat and Worldscope/Datastream | DATA: From 7/1/2002 to 06/30/2018 | *Gross of trading costs.

**Annualized trading costs are estimated as the market impact of transactions, assuming \$10B in AUM.

Historical Excess Return



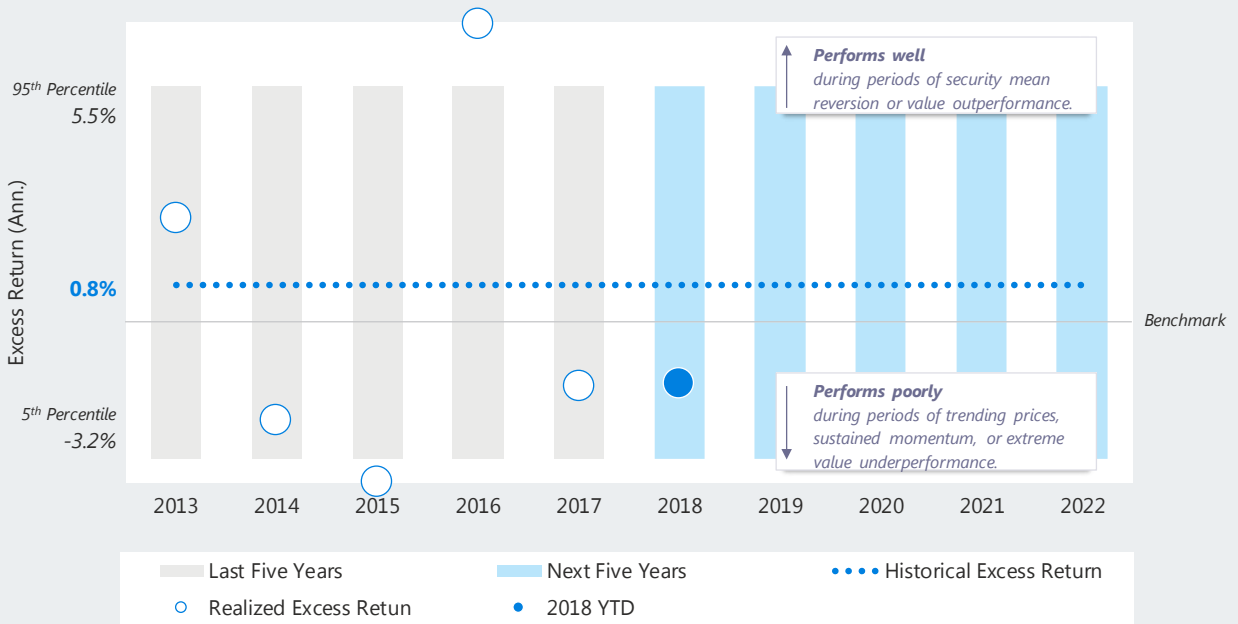
SOURCE: CRSP/Compustat and Worldscope/Datastream | DATA: From inception to 06/30/2018 | NOTE: Annualized trading costs are estimated as the market impact of transactions, assuming \$10B in AUM for US and Global portfolios and \$1B for Emerging Markets.

INCEPTION DATES: Global 07/01/2002 | US 07/01/1968 | DEV ex US 07/01/1989 | EM 07/01/2002

What to Expect?

The RAFI Fundamental Global Index shows 0.8% in annualized excess returns since 2002. However, those results have come with a wide range of outcomes (+- 5% or more) in any given year.

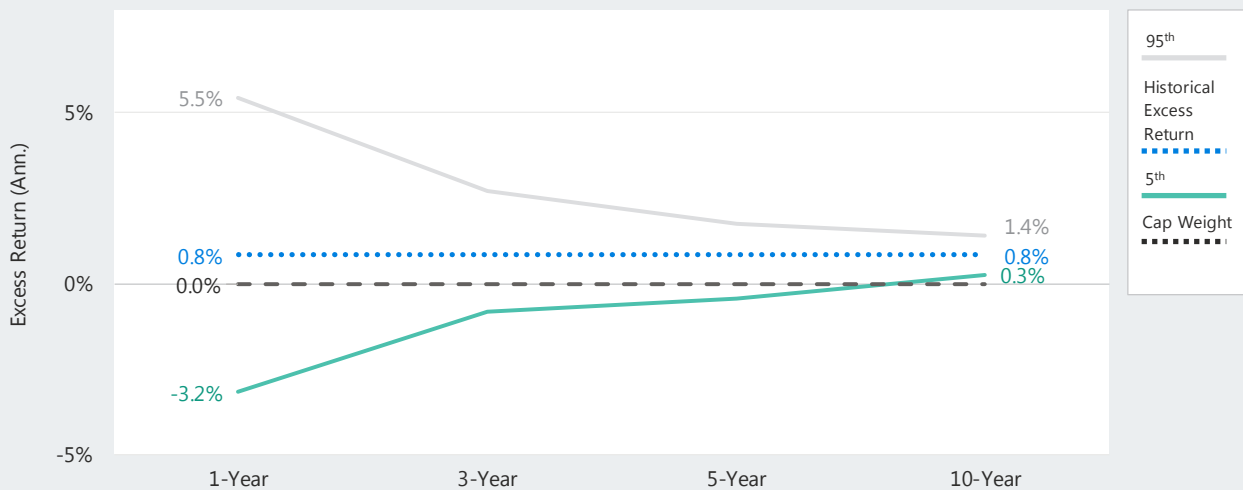
Calendar Excess Returns



NOTE: Based on rolling returns from simulated data | SOURCE: CRSP/Compustat and Worldscope/Datastream | DATA: As of 06/30/2018

Rolling Excess Returns

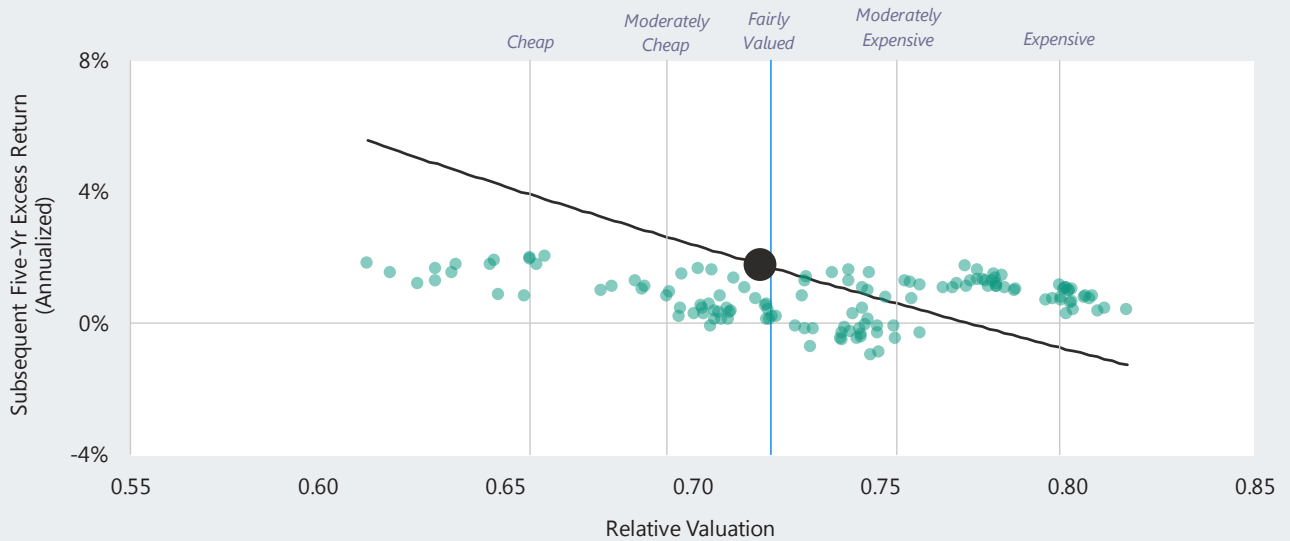
Longer investment horizons produce more predictable returns.



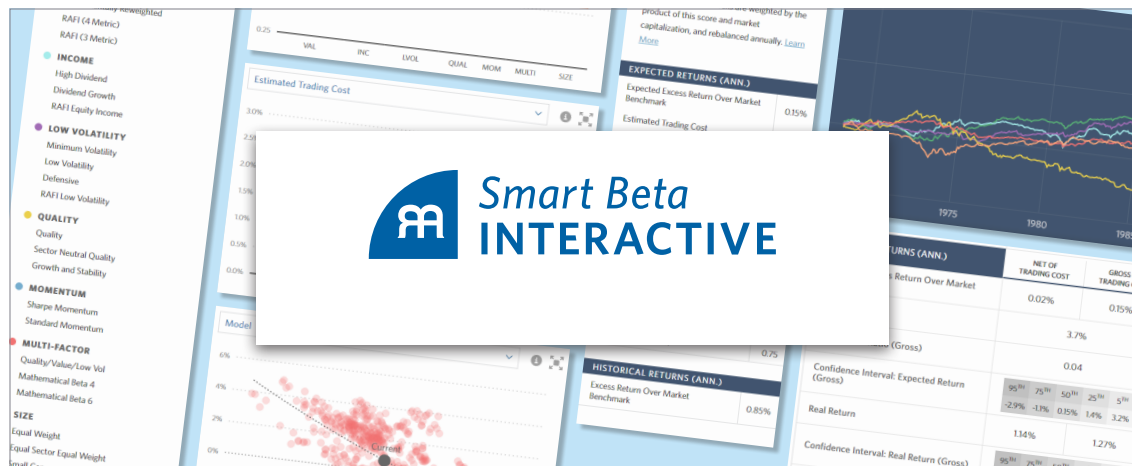
NOTE: Based on rolling returns from simulated data | SOURCE: CRSP/Compustat and Worldscope/Datastream | DATA: As of 06/30/2018

The Index trades at a **discount of 28% (0.72x)** to its cap-weighted benchmark. This is **fairly valued** relative to its **median discount of 28% (0.72x)**. Given current valuations, our **Smart Beta Interactive** website forecasts an annualized excess return of **1.8%** over the next five years (gross of costs).

Valuations & Return Expectations



SOURCE: CRSP/Compustat and Worldscope/Datastream | DATA: From 7/1/2002 to 06/30/2018



Learn More

SEPTEMBER 2016

Will Your Factor Deliver? An Examination of Robustness and Implementation Costs

JASON HSU, VITALI KALESNIK, NOAH BECK, AND HELGE KOSTKA

Learn More

FEBRUARY 2017

Forecasting Factor and Smart Beta Returns (Hint: History Is Worse than Useless)

ROB ARNOTT, NOAH BECK, AND VITALI KALESNIK

Past Performance & Characteristics

AS OF 09-30-2018

Quarterly Commentary

The RAFI Fundamental Global Index underperformed its benchmark, the FTSE All World Index, by 38 bps for the quarter driven by continued headwinds in value (4.2% for MSCI ACWI Value vs 4.4% MSCI ACWI). The biggest detractor to underperformance was an underweight to Amazon (-0.18 bps). Technology was a mixed bag with an underweight allocation resulting in the next two largest detractors from performance, Apple (-10 bps), and Microsoft (-9 bps), as well as the three biggest contributors, Facebook (17 bps), Tencent (13 bps), and Alibaba (5 bps). Regionally, an underweight to the United States was the biggest detractor of performance (-0.26 bps) which is not surprising considering the three largest detractors were all US companies.

Attributions and performance commentary: <https://www.rafi.com/investor-support/resources>

Trailing Returns

Index	QTD	1 Yr	3 Yr	5 Yr	10 Yr	ITD*	10-Yr Volatility	10-Yr TE**
RAFI Fundamental Global Index	4.0%	8.1%	14.7%	8.7%	9.0%	13.7%	16.6%	2.6%
MSCI AC World Index	4.4%	10.3%	14.0%	9.2%	8.8%	16.1%	15.8%	N/A

SOURCE: FactSet | Data: As of 09/30/2018 in USD | INCEPTION DATE: 01/31/2017

* Inception to Date (ITD) uses the first full month of returns after inception date. All returns prior to inception are simulated. Please see disclosures for important information regarding simulated performance.

** Annualized Tracking Error calculated against each index's appropriate benchmark using the first full month of returns following index inception. Index returns prior to inception are simulated.

Characteristics

Index	Number of Holdings	P/E	P/B	P/S	Dividend Yield	Market Cap / \$B
RAFI Fundamental Global Index	2786	13.96	1.62	1.02	2.95	110.43

SOURCE: FactSet | Data: As of 09/30/2018 in USD | INCEPTION DATE: 01/31/2017

NOTE: Portfolio characteristics derived from FactSet. Data prior to launch are simulated. One-way turnover data are historical averages based on simulated history. Capacity is estimated at 50-basis-point market-impact level.

Sectors

RAFI Fundamental Global Index		Sector Weight
1	Basic Materials	7.39%
2	Consumer, Cyclical	12.24%
3	Consumer, Non-Cyclical	8.55%
4	Energy	12.65%
5	Financial	21.66%
6	Health Care	8.58%
7	Industrial	9.08%
8	Technology	10.66%
9	Telecommunications	5.00%
10	Utilities	4.19%

SOURCE: FactSet | DATA: As of 09/30/2018 in USD

Regions

RAFI Fundamental Global Index		Region Weight
1	BRIC	3.07%
2	Canada	3.28%
3	EM ex BRIC	5.64%
4	Europe (Other)	8.81%
5	France	4.22%
6	Germany	3.46%
7	Japan	11.51%
8	Pacific ex Japan	6.76%
9	United Kingdom	7.59%
10	United States	45.65%

SOURCE: FactSet | DATA: As of 09/30/2018 in USD

Top 10 Holdings

RAFI Fundamental Global Index		Weights (%)
1	Apple	1.66
2	Exxon Mobil	1.51
3	Royal Dutch Shell	1.36
4	Chevron	1.01
5	Microsoft	0.96
6	BP	0.88
7	AT&T	0.81
8	Total	0.77
9	JPMorgan Chase	0.76
10	Pfizer	0.73

SOURCE: FactSet | DATA: As of 09/30/2018 in USD

Disclosures (1/2)

The material contained in this document is for information purposes only. This material is not intended as an offer or solicitation for the purchase or sale of any security or financial instrument, nor is it advice or a recommendation to enter into any transaction. RAFI Indices, LLC, its affiliates, agents, and each of their respective officers, directors, employees, agents, representatives and licensors (collectively "RI") does not make any warranties, express or implied, to anyone regarding the information provided herein, including, without limitation, any warranties with respect to the timeliness, sequence, accuracy, completeness, currentness, merchantability, quality or fitness for a particular purpose or any warranties as to the results to be obtained by any third-party in connection with the use of the information. Nothing contained in this material is intended to constitute legal, tax, securities or investment advice, nor an opinion regarding the appropriateness of any investment, nor a solicitation of any type. The general information contained in this material should not be acted upon without obtaining specific legal, tax and investment advice from a licensed professional. Investors should be aware of the risks associated with data sources and quan-

titative processes used to create the content contained herein or the investment management process. Errors may exist in data acquired from third party vendors, the construction or coding of indices or model portfolios, and the construction of the spreadsheets, results or information provided. RI takes reasonable steps to eliminate or mitigate errors, and to identify data and process errors so as to minimize the potential impact of such errors, however RI cannot guarantee that such errors will not occur. Use of this material is conditioned upon, and evidence of, the user's full release of RI from any liability or responsibility for any loss or damage, direct, indirect or consequential, arising from or related to (i) any inaccuracy or incompleteness in, errors or omissions in the information or (ii) any decision made or action taken by any third party in reliance upon this information. RI shall not be liable to anyone for loss of business revenues, lost profits or any indirect, consequential, special or similar damages whatsoever, whether in contract, tort or otherwise, even if advised of the possibility of such damages.

Certain performance information presented represents simulated

performance. Hypothetical investor accounts depicted are not representative of actual client accounts. Certain performance information presented represents performance based on combined simulated index data (pre-index launch) and live index data (post-index launch). Indexes are unmanaged and cannot be invested in directly. Past simulated performance is no guarantee of future performance and does not represent actual performance of an investment product based on the index. No allowance has been made for trading costs, management fees, or other costs associated with asset management, as the information provided relates only to the index itself. Actual investment results may differ. As such, the simulated data may have under- or over-compensated for the impact, if any of certain market factors. Simulated returns may not reflect the impact that material economic and market factors might have had on the advisor's decision making if the advisor were actually managing clients' money. Simulated data is subject to the fact that it is designed with the benefit of hindsight. Simulated returns carry the risk that the performance depicted is not due to successful predictive modeling. Simulated returns cannot predict

Disclosures (2/2)

how an investment strategy will perform in the future. Simulated returns should not be considered indicative of the skill of the advisor. Investors may experience loss.

Any applicable financial instruments are not sponsored, promoted, sold or supported in any other manner by RAFI Indices, LLC, or Solactive AG nor does RAFI Indices, LLC, or Solactive AG offer any express or implicit guarantee or assurance either with regard to the results of using the Index and/or Index trade mark or the Index Price at any time or in any other respect. The Index is calculated and published by RAFI Indices, LLC, and Solactive AG. RAFI Indices, LLC, and Solactive AG use their best efforts to ensure that the Index is calculated correctly. Irrespective of their obligations towards Licensee, neither RAFI Indices, LLC, nor Solactive AG has any obligation to point out errors in the Index to third parties including but not limited to Licensee, investors and/or financial intermediaries of the financial instrument. Neither publication of the Index nor the licensing of the Index or Index trade mark for the purpose of use in connection with

the financial instrument constitutes a recommendation by RAFI Indices, LLC, or Solactive AG to invest capital in said financial instrument nor does it in any way represent an assurance or opinion of RAFI Indices, LLC, or Solactive AG with regard to any investment in the financial instrument.

The trademarks Fundamental Index™, RAFI™, Research Affiliates Equity™, RAE™, and the Research Affiliates™ trademark and corporate name and all related logos are the exclusive intellectual property of Research Affiliates, LLC, and in some cases are registered trademarks in the U.S. and other countries. Various features of the Fundamental Index™ methodology, including an accounting data-based non-capitalization data processing system and method for creating and weighting an index of securities, are protected by various patents, and patent-pending intellectual property of Research Affiliates, LLC. (See all applicable US Patents, Patent Publications, Patent Pending intellectual property and protected trademarks located at https://www.researchaffiliates.com/en_us/about-us/legal.

html, which are fully incorporated herein.) Any use of these trademarks, logos, patented or patent pending methodologies without the prior written permission of Research Affiliates, LLC, is expressly prohibited. Research Affiliates, LLC, reserves the right to take any and all necessary action to preserve all of its rights, title, and interest in and to these marks, patents or pending patents.

RAFI Indices, LLC, is a wholly owned subsidiary of Research Affiliates Global Holdings, LLC, and does not offer or provide investment advice or offer or sell any securities, commodities or derivative instruments or products. Any such business may only be conducted through registered or licensed entities and individuals permitted to do so within the respective jurisdiction and only in conjunction with the legally required disclosure documents and subject to the all legally required regulatory filings.

© 2018 RAFI Indices, LLC. All rights reserved. Duplication or dissemination prohibited without prior written permission.