

RAFI Roadmap: A guide to better investor outcomes

RAFI™ Multi-Factor Global AUD Hedged Index

BENCHMARK Global Cap-Weight Large+Mid
ASSET CLASS Equity

What Is the Process?

1. Separate the universe into large companies and small companies.
2. Form individual factor sleeves:

RAFI Factor Index Construction

Factor	Measures	Select	Weighting	Rebalance
Momentum	Standard, Idiosyncratic, and Fresh Momentum	Top 50% by weight	Cap Weight	Full Quarterly
Value	RAFI / Cap	Top 25% by weight	RAFI Weight	Quarterly staggered
Low Volatility	Global, Industry, and Country Systematic Risk	Top 25% by weight	RAFI Weight	Quarterly staggered
Quality	Profitability and Investment	Top 25% by weight	RAFI Weight	Quarterly Staggered
Size	Average of four factor portfolios (value, quality, low volatility, momentum) built within small universe and rebalanced quarterly.		Due to lack of liquidity, size is excluded from the Emerging Markets Index.	

3. Implement trading controls to minimize turnover.
4. Equally weight the five factor sleeves.

Will the Strategy Deliver?

This strategy is expected to deliver excess returns in the future because it is theoretically and empirically robust. Every investor should ask five questions before investing:

1. Who is on the other side of the trade?
2. Has the strategy worked over long and varying time periods net of changes in valuation?
3. Does the strategy produce similar results across different regions?
4. Does the the strategy produce similar results across slightly different definitions (e.g., P/B vs. P/S)?
5. Is the strategy investable in the real world net of costs?

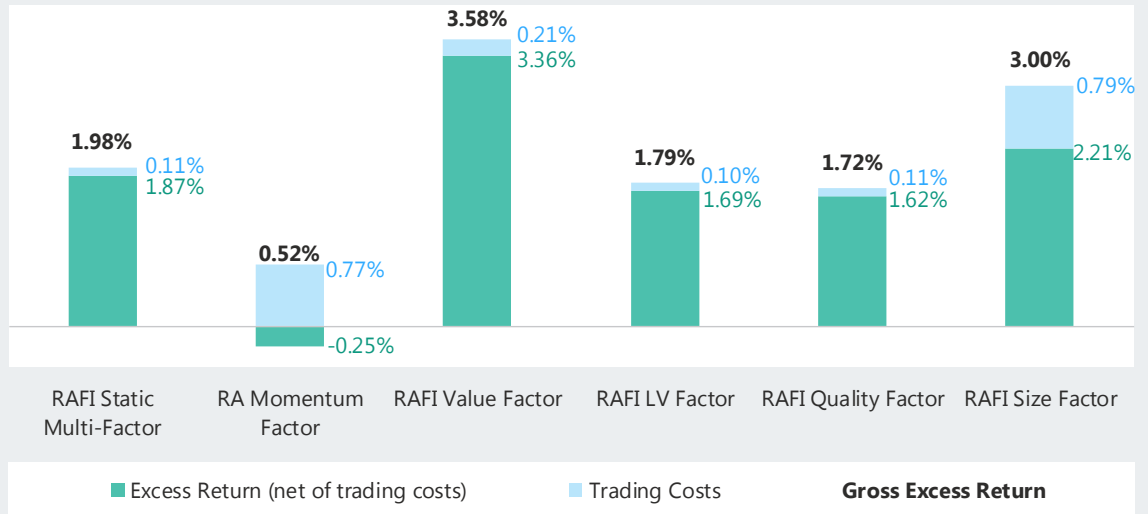
Why This Strategy Delivers

	Theory	Empirical Evidence			
Factor	1. Who's on the Other Side of the Trade?	2. Excess Return*	3. Regions That Worked	4. Definitions That Worked	5. Trading Costs**
RA Momentum Factor	The Patsy Momentum premium delivers because uninformed investors are slow to react to new information about a company.	0.52%	5 of 5	3 of 3	0.77%
RAFI Value Factor	The Performance Chaser Value premium delivers because <i>performance chasers</i> under-own value securities (preferring fast-growing glamour stocks), driving prices down, yields up, and future returns higher.	3.58%	5 of 5	3 of 4	0.21%
RAFI Low Volatility Factor	The Gambler Low volatility premium delivers because investors' preference for gambling leads them to over-own high volatility securities as "lottery tickets."	1.79%	5 of 5	4 of 4	0.10%
RAFI Quality Factor	The Empire Builder Quality premium delivers because investors are drawn to the glamour of <i>empire building</i> companies and underappreciate conservative capital allocators with wide economic moats.	1.72%	5 of 5	5 of 5	0.11%
RAFI Size Factor	All of the Above <i>All of the factor premiums above</i> tend to work better in small-capitalization markets because these markets tend to be less efficient and experience larger pricing errors.	3.00%	3 of 3	N/A	0.79%

SOURCE: CRSP/Compustat and Worldscope/Datastream | DATA: From 7/1/2002 to 06/30/2018 | *Gross of trading costs.

**Annualized trading costs are estimated as the market impact of transactions, assuming \$10B in AUM.

Historical Excess Return, by Global Factor Index



SOURCE: CRSP/Compustat and Worldscope/Datastream | DATA: From 7/1/2002 to 06/30/2018 | NOTE: Annualized trading costs are estimated as the market impact of transactions, assuming \$10B in AUM.

Learn More

SEPTEMBER 2016

[Will Your Factor Deliver? An Examination of Robustness and Implementation Costs](#)

JASON HSU, VITALI KALESNIK, NOAH BECK, AND HELGE KOSTKA

Learn More

FEBRUARY 2017

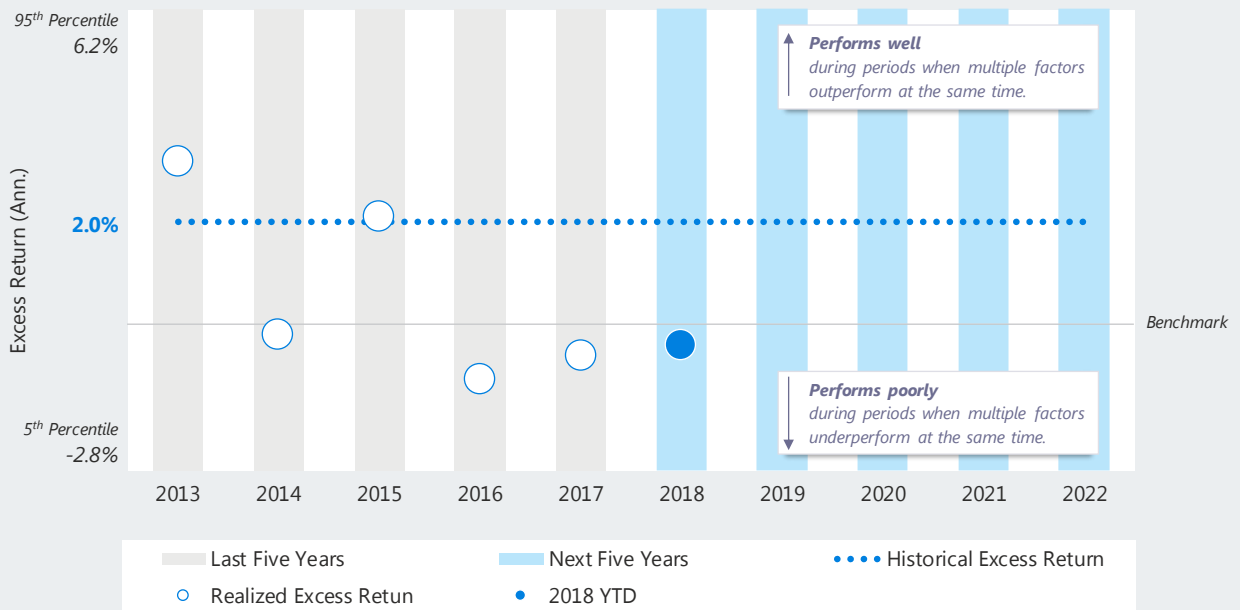
[Forecasting Factor and Smart Beta Returns \(Hint: History Is Worse than Useless\)](#)

ROB ARNOTT, NOAH BECK, AND VITALI KALESNIK

What to Expect?

The RAFI Multi-Factor Global AUD Hedged Index shows 2.0% in annualized excess returns since 2002. However, those results have come with a wide range of outcomes (+- 5% or more) in any given year.

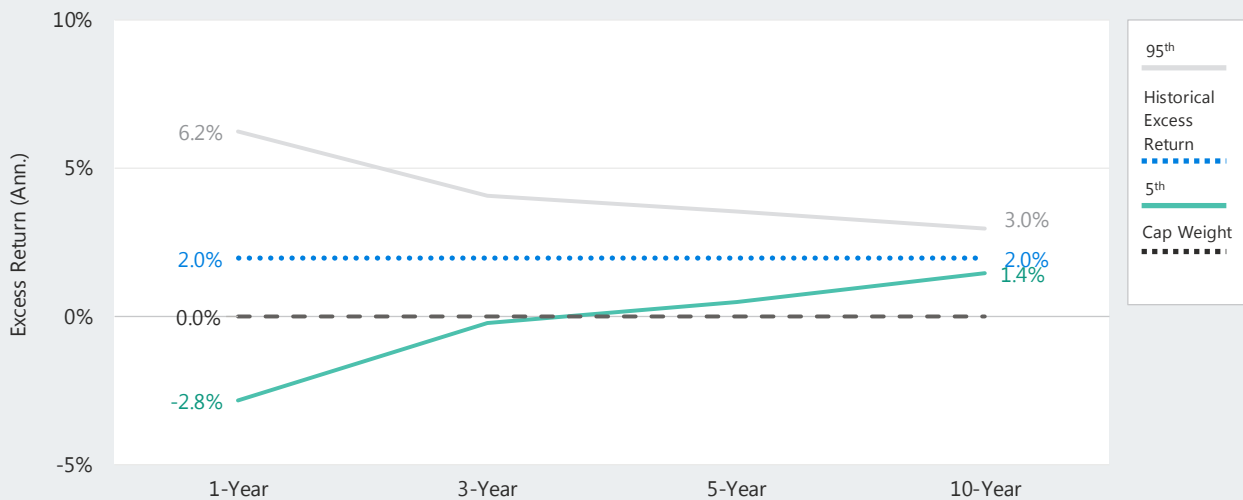
Calendar Excess Returns



NOTE: Based on rolling returns from simulated data | SOURCE: CRSP/Compustat and Worldscope/Datastream | DATA: As of 06/30/2018

Rolling Excess Returns

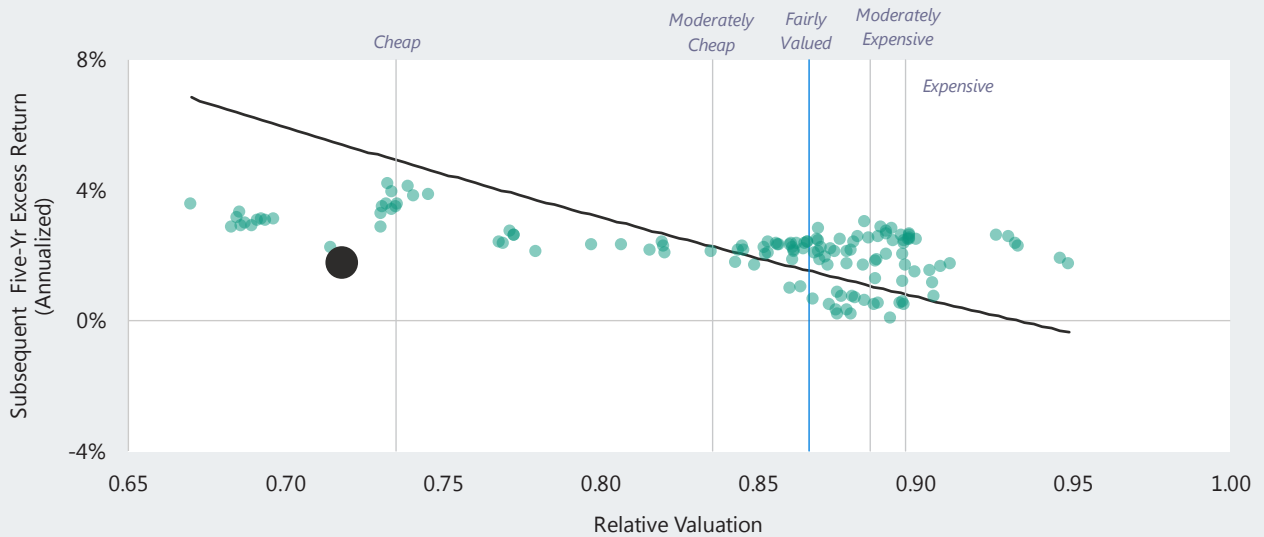
Longer investment horizons produce more predictable returns.



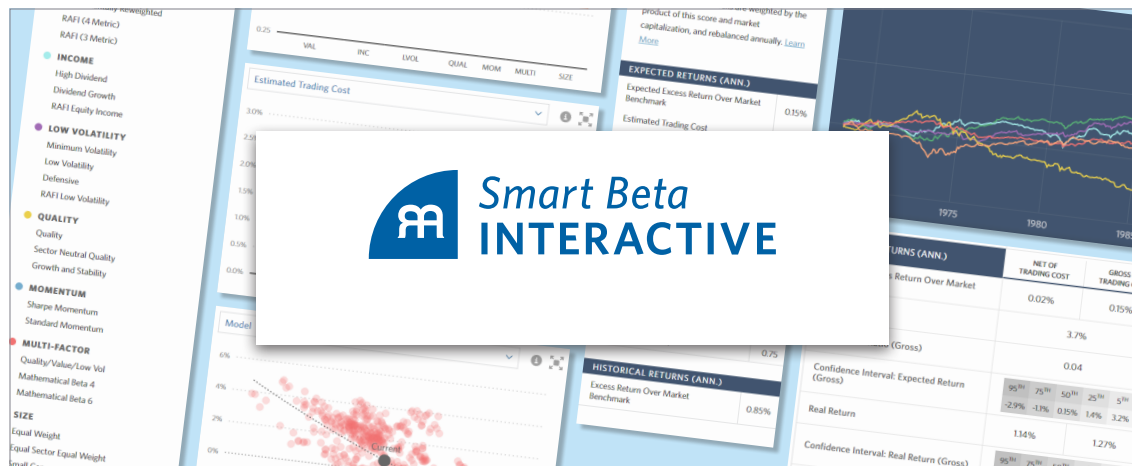
NOTE: Based on rolling returns from simulated data | SOURCE: CRSP/Compustat and Worldscope/Datastream | DATA: As of 06/30/2018

The Index trades at a **discount of 15% (0.85x)** the relative valuation of its cap-weighted benchmark. This is **fairly valued** relative to its **median discount of 13% (0.87x)**. Given current valuations, our **Smart Beta Interactive** website forecasts an annualized excess return of **1.8%** over the next five years (gross of costs).

Valuations & Return Expectations



SOURCE: CRSP/Compustat and Worldscope/Datastream | DATA: From 7/1/2002 to 06/30/2018



Learn More

JULY 2014

Finding Smart Beta in the Factor Zoo

JASON HSU AND VITALI KALESNIK

Past Performance & Characteristics

AS OF 09-30-2018

Quarterly Commentary (for RAFI™ Multi-Factor Global Index™)

The RAFI Multi-Factor Global Index underperformed the MSCI AC World Index All Cap by 15 bps for the quarter ending September 2018. The RAFI Low Volatility Factor Global Index was the only single-factor strategy that outperformed its benchmark for the quarter. The RAFI Momentum Factor Global Index was the worst performing single-factor strategy during the quarter.

Attributions and performance commentary: <https://www.rafi.com/investor-support/resources>

Trailing Returns

Index	QTD	1 Yr	3 Yr	5 Yr	10 Yr	ITD*	10-Yr Volatility	10-Yr TE**
RAFI Multi-Factor Global AUD Hedged Net Index	2.2%	2.3%	13.3%	4.8%	8.3%	12.3%	23.9%	10.2%
MSCI AC World Index All Cap	4.0%	10.1%	14.1%	9.3%		16.0%		N/A
RAFI Value Factor Global Index	3.6%	11.6%	14.8%	9.0%	11.1%	14.0%	17.5%	4.5%
RAFI Low Volatility Factor Global Index	4.9%	7.2%	10.3%	8.6%	9.3%	11.9%	12.4%	5.9%
RAFI Quality Factor Global Index	4.3%	8.8%	13.1%	8.3%	9.8%	13.6%	14.8%	2.5%
RA Momentum Factor Global Index	3.4%	9.4%	12.9%	8.7%	8.5%	16.8%	15.0%	3.3%
MSCI AC World Index	4.4%	10.3%	14.0%	9.2%	8.8%	16.1%	15.8%	N/A
RAFI Size Factor Developed Index	2.0%	10.0%	13.3%	10.0%	11.1%	15.3%	16.9%	4.5%
MSCI World Index Small Cap	2.1%	10.6%	15.2%	10.1%	11.5%	15.9%	17.7%	N/A

SOURCE: FactSet | Data: As of 09/30/2018 in USD | INCEPTION DATE: 01/31/2017

* Inception to Date (ITD) uses the first full month of returns after inception date. All returns prior to inception are simulated. Please see disclosures for important information regarding simulated performance.

** Annualized Tracking Error calculated against each index's appropriate benchmark using the first full month of returns following index inception. Index returns prior to inception are simulated.

Characteristics

Index	Number of Holdings	P/E	P/B	P/S	Dividend Yield	Market Cap / \$B
RAFI Multi-Factor Global Index	3375	15.61	1.99	1.01	2.63	75.24
RAFI Value Factor Global Index	734	11.63	1.13	0.52	3.06	49.50
RAFI Low Volatility Factor Global Index	986	16.09	1.96	1.05	3.01	68.46
RAFI Quality Factor Global Index	953	15.79	2.87	1.30	2.90	95.87
RA Momentum Factor Global Index	911	17.13	2.50	1.55	2.08	128.81
RAFI Size Factor Developed Index	1,728	18.10	2.18	1.16	2.16	7.65

SOURCE: FactSet | Data: As of 09/30/2018 in USD | INCEPTION DATE: 01/31/2017

NOTE: Portfolio characteristics derived from FactSet. Data prior to launch are simulated. One-way turnover data are historical averages based on simulated history. Capacity is estimated at 50-basis-point market-impact level.

Correlation of Excess Returns

Global (6/2007-9/2018)	RAFI Value Factor Global	RAFI Low Volatility Factor Global	RAFI Quality Factor Global	RA Momentum Factor Global	RAFI Size Factor Developed	Tracking Error*
RAFI Value Factor Global	1	-0.23	-0.03	-0.21	0.38	4.36%
RAFI Low Volatility Factor Global	N/A	1	0.54	-0.08	-0.11	6.06%
RAFI Quality Factor Global	N/A	N/A	1	0.51	-0.11	2.60%
RA Momentum Factor Global	N/A	N/A	N/A	1	0.05	3.44%
RAFI Size Factor Developed	N/A	N/A	N/A	N/A	1	4.59%
RAFI Multi-Factor Global AUD Hedged Net						10.57%

SOURCE: FactSet | DATA: As of 09/30/2018 in USD | *Annualized Tracking Error calculated against each index's appropriate benchmark using the first full month of returns following index inception. Index returns prior to inception are simulated.

Top 10 Holdings

RAFI Multi-Factor Global Index	Weights (%)	Value Factor	Low Vol. Factor	Quality Factor	Mom. Factor	Size Factor
1 Walmart	1.08	2.14	2.28	-	0.56	-
2 IBM	1.04	0.96	2.06	2.03	-	-
3 Verizon	0.88	-	1.02	2.12	0.93	-
4 CVS Caremark	0.77	1.85	1.68	-	-	-
5 Target	0.76	1.22	1.10	1.13	0.20	-
6 Johnson & Johnson	0.72	-	2.20	1.12	-	-
7 Chevron	0.66	2.06	-	-	0.98	-
8 Express Scripts Holding Company	0.60	1.29	1.28	-	0.22	-
9 ConocoPhillips	0.56	2.23	-	-	0.38	-
10 Apple	0.56	-	-	2.59	-	-

SOURCE: FactSet | DATA: As of 09/30/2018 in USD

Sectors

Sector	RAFI Multi-Factor Global Index	RAFI Value Factor Global Index	RAFI Low Volatility Factor Global Index	RAFI Quality Factor Global Index	RA Momentum Factor Global Index
1 Basic Materials	8.03%	10.81%	4.31%	8.64%	7.34%
2 Consumer, Cyclical	17.31%	15.99%	13.85%	20.71%	17.06%
3 Consumer, Non-Cyclical	12.68%	7.41%	21.47%	15.81%	6.95%
4 Energy	9.74%	28.67%	1.75%	2.33%	11.05%
5 Financial	13.98%	8.98%	17.22%	7.42%	14.31%
6 Health Care	8.12%	3.50%	11.05%	7.24%	8.98%
7 Industrial	10.73%	6.31%	10.59%	14.21%	10.81%
8 Technology	10.94%	5.35%	6.14%	13.79%	18.92%
9 Telecommunications	4.89%	5.14%	8.25%	7.80%	2.21%
10 Utilities	3.57%	7.85%	5.39%	2.05%	2.36%

SOURCE: FactSet | DATA: As of 09/30/2018 in USD

Disclosures (1/2)

The material contained in this document is for information purposes only. This material is not intended as an offer or solicitation for the purchase or sale of any security or financial instrument, nor is it advice or a recommendation to enter into any transaction. RAFI Indices, LLC, its affiliates, agents, and each of their respective officers, directors, employees, agents, representatives and licensors (collectively "RI") does not make any warranties, express or implied, to anyone regarding the information provided herein, including, without limitation, any warranties with respect to the timeliness, sequence, accuracy, completeness, currentness, merchantability, quality or fitness for a particular purpose or any warranties as to the results to be obtained by any third-party in connection with the use of the information. Nothing contained in this material is intended to constitute legal, tax, securities or investment advice, nor an opinion regarding the appropriateness of any investment, nor a solicitation of any type. The general information contained in this material should not be acted upon without obtaining specific legal, tax and investment advice from a licensed professional. Investors should be aware of the risks associated with data sources and quan-

titative processes used to create the content contained herein or the investment management process. Errors may exist in data acquired from third party vendors, the construction or coding of indices or model portfolios, and the construction of the spreadsheets, results or information provided. RI takes reasonable steps to eliminate or mitigate errors, and to identify data and process errors so as to minimize the potential impact of such errors, however RI cannot guarantee that such errors will not occur. Use of this material is conditioned upon, and evidence of, the user's full release of RI from any liability or responsibility for any loss or damage, direct, indirect or consequential, arising from or related to (i) any inaccuracy or incompleteness in, errors or omissions in the information or (ii) any decision made or action taken by any third party in reliance upon this information. RI shall not be liable to anyone for loss of business revenues, lost profits or any indirect, consequential, special or similar damages whatsoever, whether in contract, tort or otherwise, even if advised of the possibility of such damages.

Certain performance information presented represents simulated

performance. Hypothetical investor accounts depicted are not representative of actual client accounts. Certain performance information presented represents performance based on combined simulated index data (pre-index launch) and live index data (post-index launch). Indexes are unmanaged and cannot be invested in directly. Past simulated performance is no guarantee of future performance and does not represent actual performance of an investment product based on the index. No allowance has been made for trading costs, management fees, or other costs associated with asset management, as the information provided relates only to the index itself. Actual investment results may differ. As such, the simulated data may have under- or over-compensated for the impact, if any of certain market factors. Simulated returns may not reflect the impact that material economic and market factors might have had on the advisor's decision making if the advisor were actually managing clients' money. Simulated data is subject to the fact that it is designed with the benefit of hindsight. Simulated returns carry the risk that the performance depicted is not due to successful predictive modeling. Simulated returns cannot predict

Disclosures (2/2)

how an investment strategy will perform in the future. Simulated returns should not be considered indicative of the skill of the advisor. Investors may experience loss.

Any applicable financial instruments are not sponsored, promoted, sold or supported in any other manner by RAFI Indices, LLC, or Solactive AG nor does RAFI Indices, LLC, or Solactive AG offer any express or implicit guarantee or assurance either with regard to the results of using the Index and/or Index trade mark or the Index Price at any time or in any other respect. The Index is calculated and published by RAFI Indices, LLC, and Solactive AG. RAFI Indices, LLC, and Solactive AG use their best efforts to ensure that the Index is calculated correctly. Irrespective of their obligations towards Licensee, neither RAFI Indices, LLC, nor Solactive AG has any obligation to point out errors in the Index to third parties including but not limited to Licensee, investors and/or financial intermediaries of the financial instrument. Neither publication of the Index nor the licensing of the Index or Index trade mark for the purpose of use in connection with

the financial instrument constitutes a recommendation by RAFI Indices, LLC, or Solactive AG to invest capital in said financial instrument nor does it in any way represent an assurance or opinion of RAFI Indices, LLC, or Solactive AG with regard to any investment in the financial instrument.

The trademarks Fundamental Index™, RAFI™, Research Affiliates Equity™, RAE™, and the Research Affiliates™ trademark and corporate name and all related logos are the exclusive intellectual property of Research Affiliates, LLC, and in some cases are registered trademarks in the U.S. and other countries. Various features of the Fundamental Index™ methodology, including an accounting data-based non-capitalization data processing system and method for creating and weighting an index of securities, are protected by various patents, and patent-pending intellectual property of Research Affiliates, LLC. (See all applicable US Patents, Patent Publications, Patent Pending intellectual property and protected trademarks located at https://www.researchaffiliates.com/en_us/about-us/legal.

html, which are fully incorporated herein.) Any use of these trademarks, logos, patented or patent pending methodologies without the prior written permission of Research Affiliates, LLC, is expressly prohibited. Research Affiliates, LLC, reserves the right to take any and all necessary action to preserve all of its rights, title, and interest in and to these marks, patents or pending patents.

RAFI Indices, LLC, is a wholly owned subsidiary of Research Affiliates Global Holdings, LLC, and does not offer or provide investment advice or offer or sell any securities, commodities or derivative instruments or products. Any such business may only be conducted through registered or licensed entities and individuals permitted to do so within the respective jurisdiction and only in conjunction with the legally required disclosure documents and subject to the all legally required regulatory filings.

© 2018 RAFI Indices, LLC. All rights reserved. Duplication or dissemination prohibited without prior written permission.